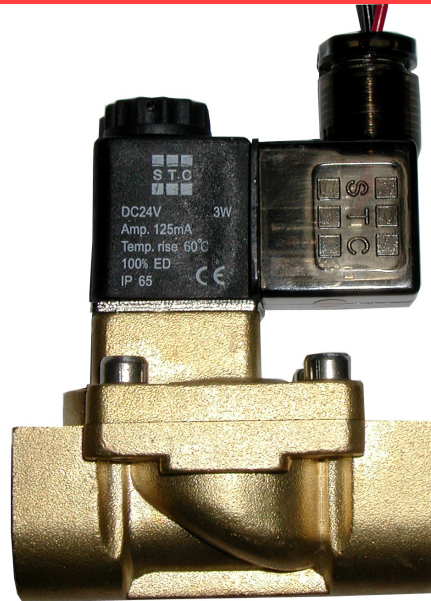


STC 2V130-250 Series Solenoid Valves

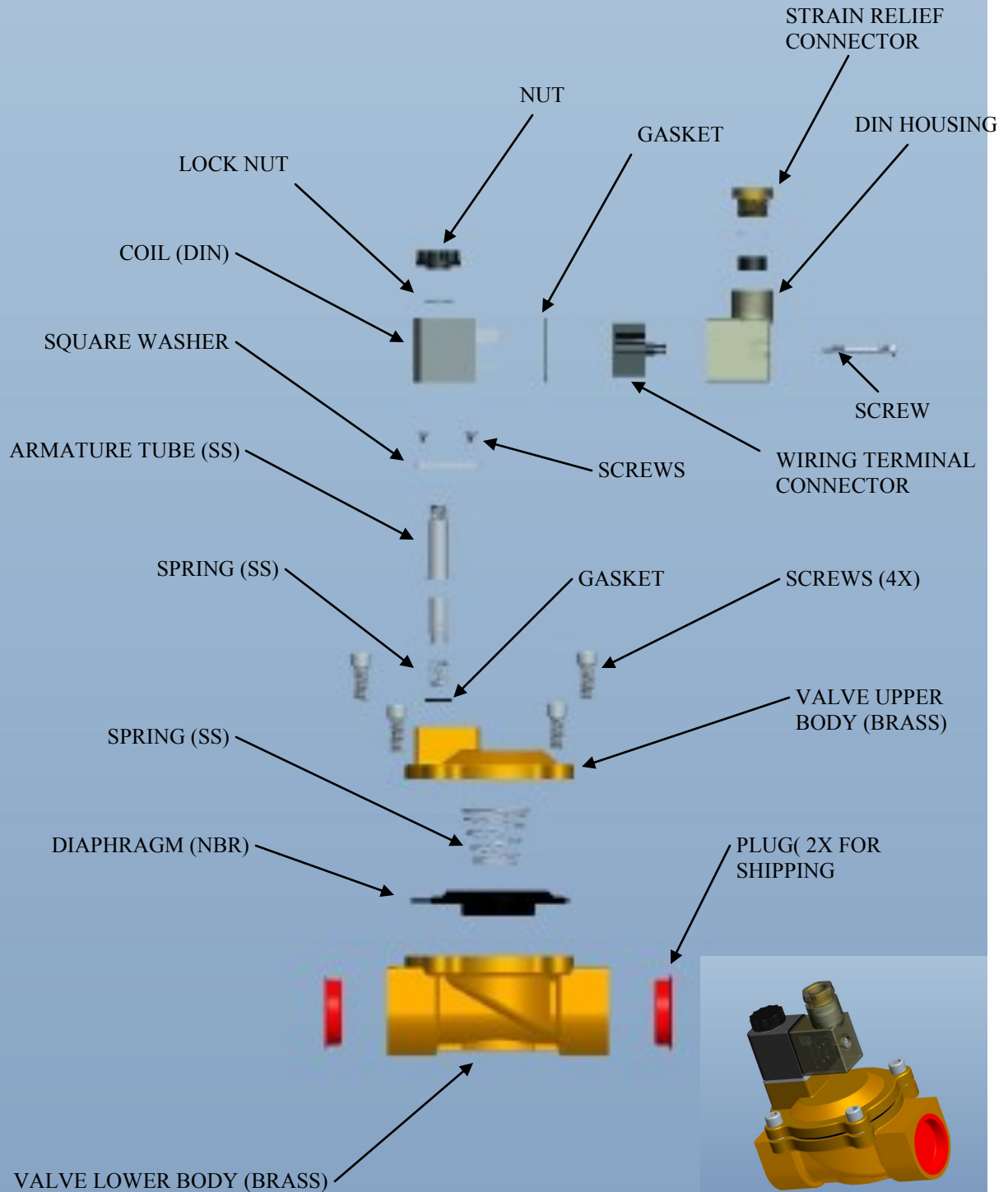


2V130-250 Series Solenoid Valve Specifications

Valve Model	2V130-3/8	2V130-1/2	2V250-3/4	2V250-1
Valve Type	2 Way, Normally Closed (NC)			
Action	Pilot Operated Diaphragm			
Orifice (mm)	13mm, C _v =4.8	13mm, C _v =4.8	25mm, C _v =12	25mm, C _v =12
Operating Pressure	5 to 115 PSI, Option: 5 to 150 PSI			
Proof Pressure	345 PSI @Room Temperature			
Operating Temperature	14 to 176°F (-10 to 80°C) w/ NBR Seal; 5 to 248°F (-15 to 120°C) w/ Viton Seal			
Port Size (NPT)	3/8"	1/2"	3/4"	1"
Body Materials	Brass			
Seal Materials	NBR, Option: Viton			
Coil Duty	F Class IP65 (200C-U), Option: Explosion Proof Coil (200C-E)			
Voltage	Options: 12, 24 VDC; 24,110/120, 220/240 VAC (50/60Hz), Explosion Proof Coil			
Voltage Tolerance	±10% of Specified voltage			
Coil Power	3 to 6.5W			
Electrical Connections	DIN			
Installation	No Orientation Requirement (Optimum Position: Flow Horiz. & Solenoid Vert.)			
Service	Air, Water, Oil, Gas			

2V130-250 SERIES SOLENOID VALVE COMPONENTS

(SS) = Stainless Steel



Installation and Operation:

To connect the valve Inlet and Outlet:

Connect the inlet and outlet in the direction of the arrow marked on the valve.

To install coil:

Put the coil onto the armature tube of the valve. Put the lock-washer and nut onto the armature tube. Hand tighten the nut, then use a wrench to tighten the nut to a quarter turn; **do not over-tighten the nut, it may cause the armature tube to fail pre-maturely.**

To connect DIN coil:

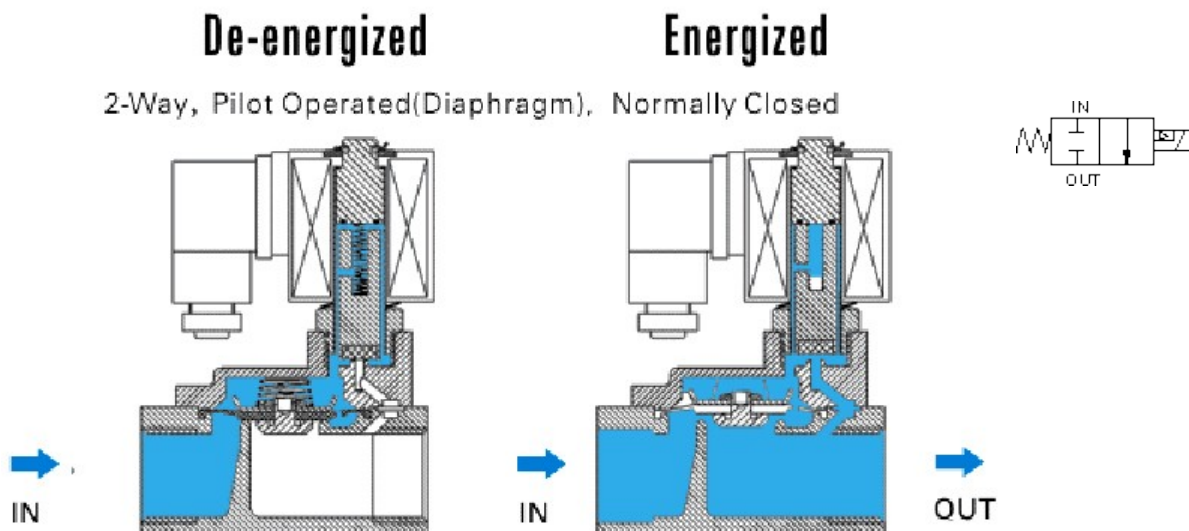
1. Remove the Philip screw from the plastic housing and unplug it from the DIN coil.
2. From the screw opening, push the terminal block out from the plastic housing.
3. Note the 1, 2 and ground markings on underside of DIN enclosure.
4. For DC DIN Coil, Connect 1 to Positive, 2 to Negative.
5. For AC DIN Coil, connect 1 to HOT wire, 2 to Neutral wire, and if required connect

Note: Standard valves are supplied with continuous duty coils. The proper class of insulation for the service is indicated on the coil. The coil temperature may become hot after being energized for extended periods, but it is normal. Smoke or burning odor indicates excessive coil temperature and should disconnect the power to the coil immediately.

Operation: 2V130-250 Series 2/2 Pilot Operated Diaphragm Solenoid Valve NC

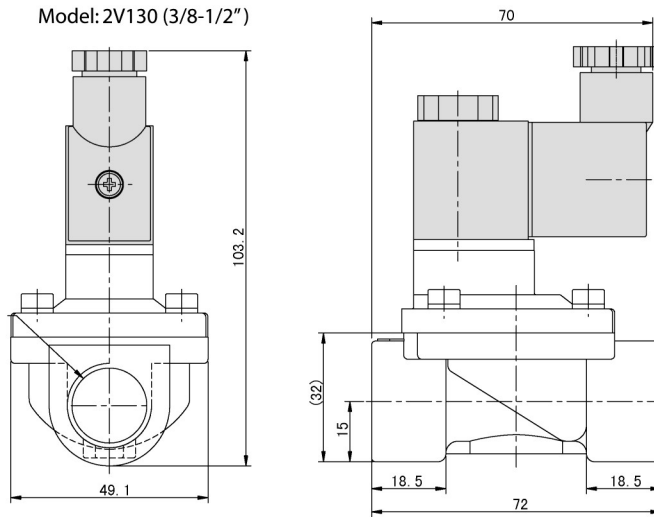
To open: when the valve receives an electrical signal, a magnetic field is formed which attracts the plunger covering the pilot orifice to lift off, causing system pressure (holding the diaphragm/piston closed) to drop. As system pressure on the top of the diaphragm/piston is reduced, full system pressure on the other side of the diaphragm/piston acts to lift the diaphragm/piston away from the main orifice, which allows media flow through the valve. Since the bleed orifice is dimensionally smaller than the pilot orifice, the system pressure can't rebuild on the top of the diaphragm/piston as long as the pilot orifice remains open.

To close: when the valve is de-energized, it releases its hold on the plunger. Then the plunger drops and covers the main orifice. The system pressure builds up on the top of the diaphragm/piston through the

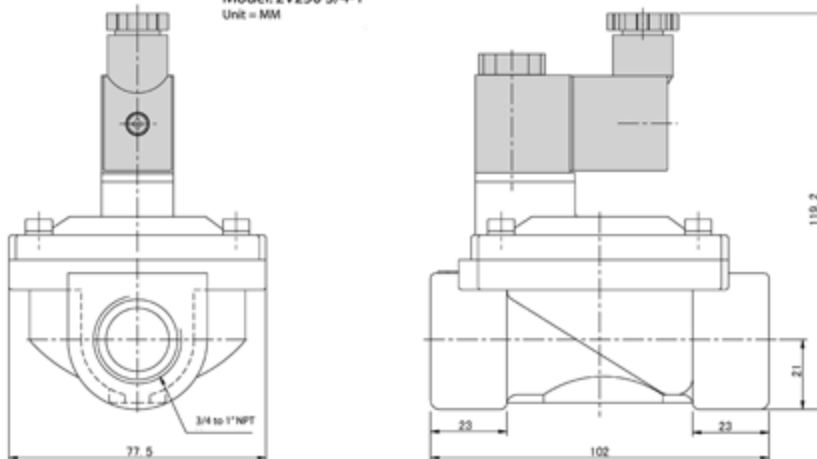


2V130-250 Series Solenoid Valve Installation Dimensions (mm)

Model: 2V130 (3/8-1/2")



Model: 2V250 3/4-1"
Unit = MM



Maintenance and Troubleshooting for Common STC Valve Types

Direct Acting and Direct Lift Diaphragm

Note: If you do not hear a clicking sound when the valve is operational, and the wiring is correct, the coil may be burned out and must be replaced. This commonly occurs when input voltages are higher than the coil's specifications.

Direct Acting Valves:

1. Remove any coils attached to the valve.
2. Unscrew the armature tube and remove it from the valve body. The plunger and spring are not fastened to the tube and will fall out.
3. Check for any debris that may have collected on the plunger and the hole in the center of the valve.
4. Place the spring back in the plunger, and insert the plunger back into the armature tube.
5. Screw the armature tube back into the valve, and reattach the coils.

Direct Lift Diaphragm Valves:

1. Remove any coils attached to the valve.
2. Unscrew the four screws around the top of the valve and remove the valve upper body.
3. Check for debris under the inside armature tube. Remove the diaphragm.
4. Check for debris around the lip of the inner chamber of the valve lower body.
5. Place the spring in back in the valve upper body, and line up the holes in the diaphragm and valve upper body for the screws.
6. Replace and tighten the screws, and reattach the coils.

Reference Figures



Figure 1: Complete assembly of the direct acting valve.



Figure 2: Direct acting valve with all components shown. Debris on the plunger may lead to valve malfunction.



Figure 3: Valve body. Debris around the center hole may lead to valve malfunction.



Figure 4: Complete assembly of direct lift diaphragm valve

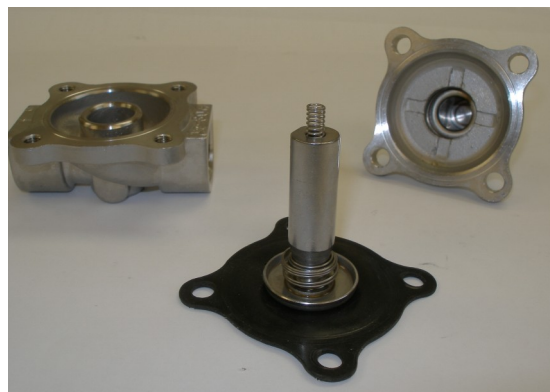


Figure 5: Direct lift diaphragm valve with all components shown



Figure 6: Diaphragm. Debris in the center hole may cause valve malfunction

Figure 7: Lower body. Debris in the lip of the inner chamber may cause valve malfunction



Terms and Conditions

By purchasing from SIZTO TECH CORPORATION (STC), you agree to these TERMS AND CONDITIONS. No other terms shall apply except as agreed in writing signed by us. We reserve the right to correct typographic errors and reject orders.

SHIPMENTS:

All shipments are F.O.B. 892 Commercial Street, Palo Alto, CA 94303, USA. Most orders are shipped via UPS Standard Ground unless instructions accompany order. Outside the UPS zones, shipment will be made Best Way. The responsibility for goods delay, lost or damaged in transit rests with the carrier and purchaser. Purchaser may purchase shipping insurance to cover lost or damaged products caused by shipping.

RETURN OF MERCHANDISE:

No merchandise is accepted for return 30 days after delivery date. No credit allowed on merchandise shipped as ordered and returned without obtaining an authorization number IN ADVANCE. A 20% restocking charge applies to all returns, and transportation charges must be fully prepaid. We will pay **ground** transportation charges on re-sent or returned merchandise due to STC's error.

Shortages & Mis-Shipments: Any shortages or mis-shipment must be reported within 15 days.

CANCELLATION POLICY:

Blanket order can be canceled 90 days before scheduled ship date. There will be a 10% charge if a blanket order is cancel within 90 days of scheduled ship date, and a 20% charge if cancel within 60 days. Regular order for non-custom parts can be canceled any time before the order is shipped. For custom parts, a 30% down payment is required either at the time of order or 90 days prior to scheduled ship date, whichever comes later.

Remittances should be sent to:

Sizto Tech Corporation, 892 Commercial Street, Palo Alto, CA 94303, USA

Credit Card Payments: Visa, MasterCard, Discover, or American Express Accepted

International Customers: Advance Payment Required via Bank Wire, Cashier's Check or Approved Credit Card.

Credit Application: To establish a net 30 day account, please mail or fax three trade references with complete mailing addresses and account numbers.

LIMITED WARRANTY – IMPORTANT NOTICE TO PURCHASER:

Sizto Tech Corporation (STC) only warrants this product to be free from defects in materials and workmanship at the time of shipment. This limited warranty expires one year after delivery to the end-user. STC's entire obligation to the Purchaser for breach of this limited warranty shall be limited to replacement of the defective product or refund of the original purchase price of this product, at STC's option. Purchaser has thirty (30) days to return the goods after STC has agreed to accept the return. All freight charges on returned material shall be paid by the Purchaser. STC's limited warranty shall not apply, however, to the product that have been subjected to misuse, alteration, accident or negligence during handling or storage.

DISCLAIMER OF IMPLIED WARRANTIES:

All implied warranties, which may arise by implication of law or application of course of dealing or usage of trade, including, but not limited to, implied warranties of merchantability or fitness for a particular purpose are expressly excluded. There are no warranties, which extend beyond the description of the faced hereof. The end user is solely responsible for the suitability and fitness of this product selected for a particular application.

OBLIGATIONS

You warrant, represent and agree: (1) to comply with all laws; (2) that our sale and shipment of the product will not, by export thereof, your legal status or otherwise, cause us to violate any law; and (3) to indemnify us against any losses from a failure by you or a third party to comply with law or these terms and conditions, or from use of the product.

SAFETY WARNING

Failure or improper selection or improper use of the components and products described herein or related items can cause death, personal injury and/or property damage. This document and other related information from STC provide products options for further investigation by users having the technical expertise. It is important that you analyze all aspects of your application and review the information concerning the component or product in the current catalog. Due to the variety of operation conditions and applications for these components or products, the user, through his own analysis and testing, is solely responsible for making the final selection, installation and maintenance of the products and assuring that all performance, safety and warning requirements of the application are met. All products set-ups and maintenance require the supervision of a qualified individual who is familiar with installation, inspection and testing through training or experience.

IMPORTANT NOTICE:

The products described herein, including without limitation, product features, specifications, design, availability and pricing, are subject to change without notice. We continuously improve the products, and we reserve the right to change specifications without incurring any obligation to incorporate new factors in equipment previously sold.



Sizto Tech Corporation

892 Commercial Street
Palo Alto, CA 94303 USA

Tel: 650-856 8833 | Fax: 650-856 8811

Email: Sales@StcValve.com; www.StcValve.com